



Accessories

- Monitor with 3 cables and plugged-in chip card
- Battery
- Protective pouch with adjustable neck strap
- Self-adhesive electrodes
- Order form, patient record and user guide
- Red closure clip for the return

Return

After completing the recording, please return the monitor to us with **the battery plugged-in**, chip card, order form and patient record.

- by Customer service
- by mail

Please follow the instructions for the return of the box:

- Remove the label from the window, turn it over
→ **Viollier AG address is visible**
- Insert the label into window
- Close the box with the red closure clip
- Postage free covered by Viollier



Herz-Lungen-Praxis | Spalenring 147 | 4055 Basel | T +41 848 121 121 | viollier.ch
Monday – Friday 07:30 – 18:00 h

© by Viollier AG / 02.2023 / 15244



IN STRUCTION

7-day ECG



Important information

Connect the monitor and battery only when attached to the patient. The recording starts as soon as the monitor and the battery are connected.

- After completing the recording, return the monitor assembled.
- Suitable for patients weighing 10 kg and over.
- Do not use in the vicinity of CT, MRI and X-rays.
- Mobile phones, strong electromagnetic sources and electric blankets can affect the quality of the recording.

[illegible]

Patient record

Please inform the patient about the diagnostic importance of filling out the patient record correctly and completely.

Please use a black ballpoint pen,
not a pencil.

Note start and end of recording with date and time.

Enter date and time of symptoms, unusual activities, medicines and sleeping period.

[illegible]

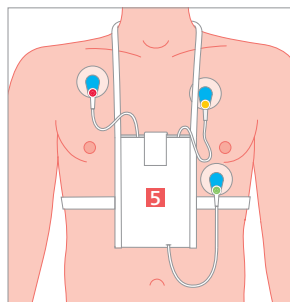
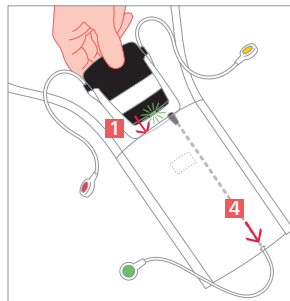
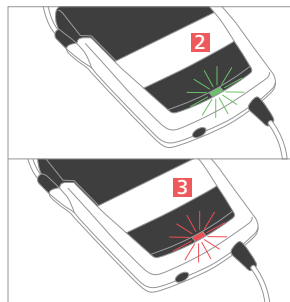
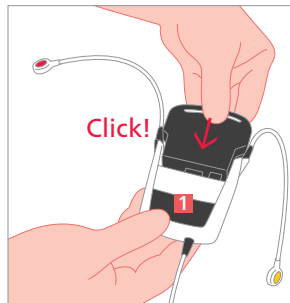
Identification and analysis

- Patient's personal details
- The date and exact start time of the recording, entered by you
- The monitor, cuff and chip card numbers entered by Viollier on the order form

Geräte-Nr.	006	Manschetten-Nr.	
Chip-Nr.	659	Akku-Nr.	010

Please only use the enclosed order form,
as this already has your address on it.

Attaching the monitor



Mounting the monitor

- Degrease the skin using ethanol 70% and shave the hair for optimal adhesion of the electrodes.
- Push monitor and battery firmly together, connection clicks audibly.
- Below the event button **1** a short fast flashing **green light 2** appear, followed by a **red light 3** and a slow flashing **green light 2**. The monitor is ready for the recording.
- Pull the green cable through the small hole at the lower end of the protective pouch **4** and slide in the monitor.
- Pull the neck strap and the monitor over the head
→ **dark grey event button 1 must be facing forward.**
- Attach the self-adhesive electrodes as depicted in the diagram.
- Attach the cable with the correct colors:
● red ● green ● yellow
- If the patient wants to bathe or shower, the electrodes must be removed. Change electrodes daily. New electrodes may be attached slightly offset to prevent redness.

Recording

The patient can trigger a new marking by himself. In the event of symptoms this can be triggered by pressing the dark grey event button **1**. If no symptoms are noticeable, the event ECG is able to recognize and record rhythm disorders by itself.

Check recording mode

Green light: recording in progress

Red light: recording ended, dismount monitor and return

Wear the monitor **5** in the protective pouch with a strap around the neck and fix it around the chest.