



Accessories

- Monitor with 3 cables and plugged-in chip card
- Battery
- Protective pouch with neck and chest strap
- Self-adhesive electrodes
- Order form, patient record and instructions for use
- Red closure clip for the return

Return

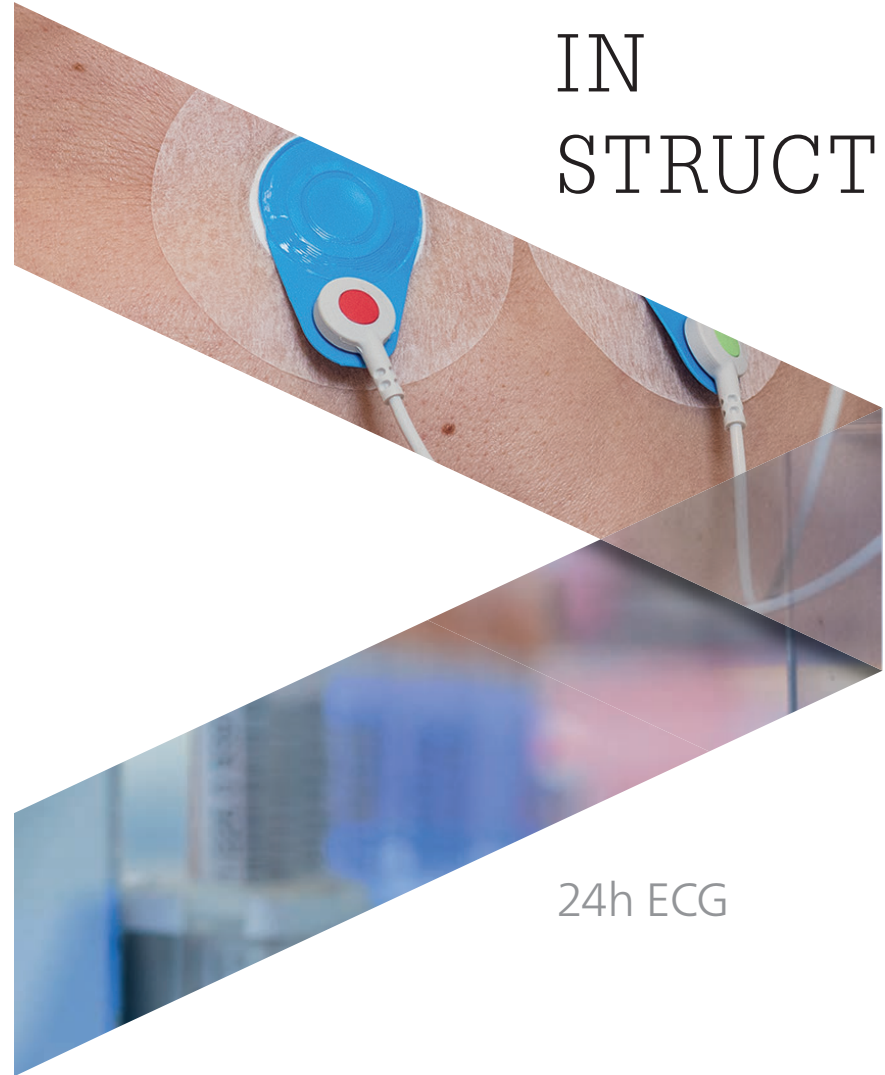
After completing the recording, please return the monitor with the battery plugged in (chip card in the monitor), order form and patient records. Viollier will cover the shipping costs.

- By customer service – return to practice
- By DPD – drop off at a pickup parcelshop → dpgroup.com/ch/mydpd/parcel-shops
- By mail

Please note the following instructions for the return of the box:

- Remove label from window
- Slide the appropriate return label (in the case) into the window
→ **Viollier AG address is visible**
- Close case with red clip

Herz-Lungen-Praxis | Spalenring 147 | 4055 Basel | T +41 848 121 121 | viollier.ch
Monday – Friday 07:30 – 18:00 h



IN STRUCTION

24h ECG

Important information

Connect the monitor and battery only when attached to the patient. The recording starts as soon as the monitor and the battery are connected.

- After completing the recording, return the monitor assembled.
- Suitable for patients weighing 10 kg and over.
- Do not use in the vicinity of CT, MRI and X-rays.
- Mobile phones, strong electromagnetic sources, and electric blankets can affect the quality of the recording.

Patient record

Please inform the patient about the diagnostic importance of filling out the patient record correctly and completely.

Please use a black ballpoint pen, not a pencil.

Note start and end of recording with date and time.

Enter date and time of symptoms, unusual activities, medicines and sleeping period.

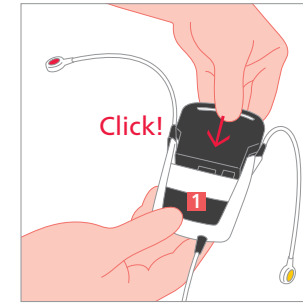
Identification and analysis

- Patient's personal details
- The date and exact start time of the recording, entered by you
- The monitor, cuff and chip card numbers entered by Viollier on the order form

Geräte-Nr.	006	Manschetten-Nr.	
Chip-Nr.	659	Akku-Nr.	010

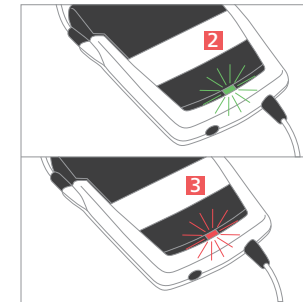
Please only use the enclosed order form, as this already has your address on it.

Attaching the monitor



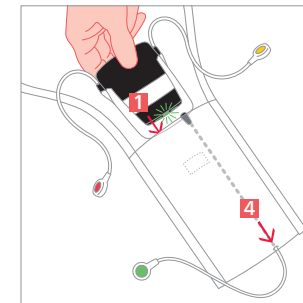
Starting the monitor

- Degrease the skin using ethanol 70% and shave the hair for optimal adhesion of the electrodes.
- Push monitor and battery firmly together, connection clicks audibly.
- Below the event button **1** a short fast flashing **green light 2** appear, followed by a **red light 3** and a slow flashing **green light 2**. The monitor is ready for the recording.
- Pull the green cable through the small hole at the lower end of the protective pouch **4** and slide in the monitor.



Mounting the monitor

- Fix the monitor in the protective pouch around the neck → dark gray event button **1** must be facing forward.
- Attach the self-adhesive electrodes as depicted in the diagram.
- Attach the cable with the correct colors: ● red ● green ● yellow



Check recording mode

Green light: recording in progress

Red light: recording ended, dismount monitor and return. The recording ends automatically after 24 hours.

Wear the monitor **5** in the protective pouch with a strap around the neck and fix it around the chest.

