

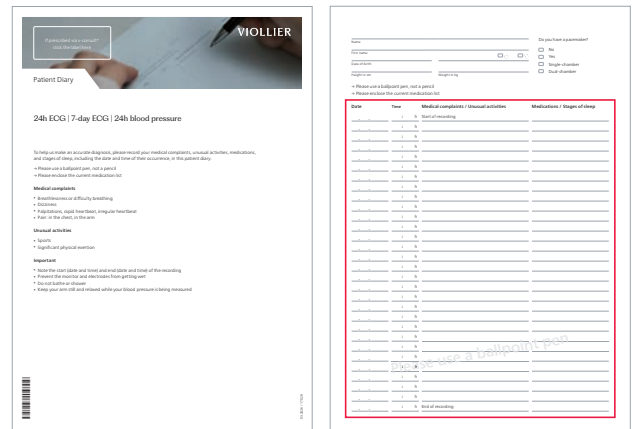
Instructions

24h blood pressure

Patient diary

Please inform the patient about the diagnostic importance of filling out the patient diary correctly and completely.

- Please use a black ballpoint pen, not a pencil
- Note start and end of recording with date and time
- Enter date and time of symptoms, unusual activities, medicines and sleeping period



Identification and analysis

- Patient's personal details
- The date and exact start time of the recording, entered by you
- The monitor, cuff and chip card numbers entered by Viollier on the order form

Geräte-Nr. **022** Manschetten-Nr. **012**

Please only use the enclosed order form, as this already has your address on it

- If prescribed via v-consult®: print labels and stick them on all documents

Return

After the recording has been completed, please return the monitor with the cuff plugged in, order form and patient records. Viollier will cover the shipping costs.

- By customer service – return to practice
- By DPD – drop off at a pickup parcelshop → dpgroup.com/ch/mydpd/parcel-shops
- By mail

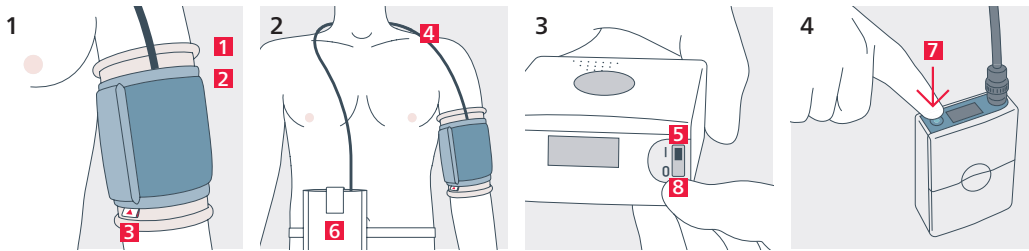
Please note the following instructions for the return of the box:

- Remove label from window
- Slide the appropriate return label (in the case) into the window → **Viollier AG address is visible**
- Close case with red clip

Important information

- **Start the monitor only when attached to the patient. Do not perform any trial measurements beforehand → monitor cannot be restarted**
- Request the suitable cuff size at Viollier:
20 – 24 cm = Children | 24 – 32 cm = Standard | 32 – 40 cm = X-Large | 38 – 50 cm = XX-Large
- The measurement intervals on the monitor are preprogrammed: every 15 minutes from 06:00 h, every 30 minutes from 10:00 h
- If a faulty measurement is taken or if the blood pressure values are clearly raised, a further measurement is triggered after 2 minutes
- To prevent faulty measurements during the blood pressure measurement, keep the arm still and extended downwards
- Leave batteries in the monitor; do not remove
- Mobile phones and strong electromagnetic sources can affect the quality of the recording

Attaching the monitor



► VIOLLIER

1 Mounting the monitor

- Pull the textile sleeve **1** over left upper arm
- Place the cuff **2** over the textile sleeve and attach tightly
- Position the marking **3** on the inside (artery) of the upper arm

- ### 2
- Place the air tube **4** around the neck and feed it downwards on the right side of the body
→ **Air tube and cuff must not be glued**
 - Wear the monitor **6** in the protective pouch on the belt around the waist

3 – 4 Starting the monitor

- Push the black sliding switch **5** to position I → Do not switch off again
- Trigger the first measurement by pressing the **blue button 7**.
If the measurement is performed correctly, the measurement value appears in the monitor display
- If no result appears on the display but a number and the letter E, check that the cuff is correctly positioned, if necessary reposition it, and trigger a new measurement by pressing the blue button
- After 24 hours switch off the monitor (position 0) **8**, dismount and return



Accessories

- Monitor with plugged-in cuff and batteries inserted
- Protective pouch with waistbelt
- Textile sleeve for upper arm
- Order form, patient record and instructions for use
- Red closure clip for the return