

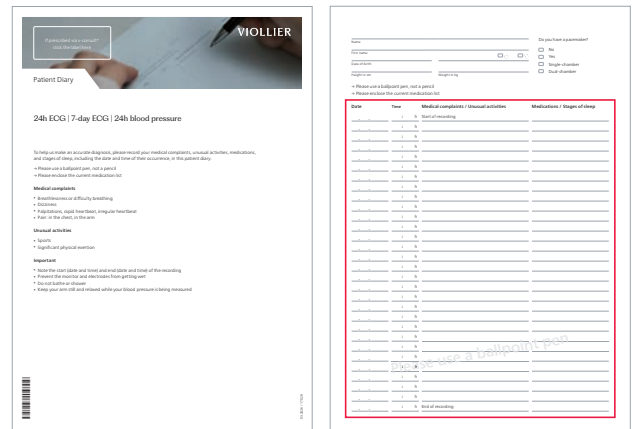
Instructions

24h ECG

Patient diary

Please inform the patient about the diagnostic importance of filling out the patient diary correctly and completely.

- Please use a black ballpoint pen, not a pencil
- Note start and end of recording with date and time
- Enter date and time of symptoms, unusual activities, medicines and sleeping period



Identification and analysis

- Patient's personal details
- The date and exact start time of the recording, entered by you
- The monitor number entered by Viollier on the order form

Geräte-Nr.	006	Manschetten-Nr.	
Chip-Nr.		Akku-Nr.	

Please only use the enclosed order form, as this already has your address on it

- If prescribed via v-consult®: print labels and stick them on all documents

Return

Please return the device, order form and patient diary to us at the end of the recording. Viollier will cover the shipping costs.

- By customer service – return to practice
- By DPD – drop off at a pickup parcelshop → dpgdgroup.com/ch/mydpd/parcel-shops
- By mail

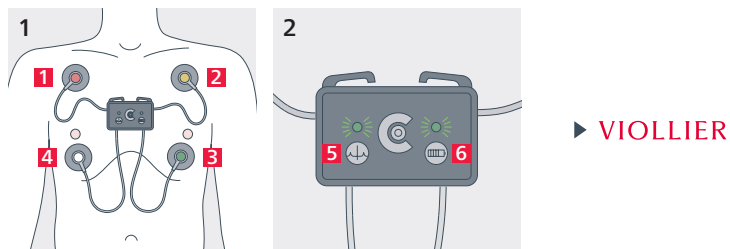
Please note the following instructions for the return of the box:

- Remove label from window
- Slide the appropriate return label (in the case) into the window → **Viollier AG address is visible**
- Close case with red clip

Important information

- **Recording begins within 60 seconds of the electrodes making contact with the skin**
- Suitable for patients weighing 10 kg and over
- Do not use in the vicinity of CT, MRI and X-rays
- Mobile phones, strong electromagnetic sources and electric blankets can affect the quality of the recording
- Wearing in the swimming pool, sauna, bathtub, shower or similar wet rooms is prohibited

Attaching the monitor



Preparation

- Degrease the skin using ethanol 70% and shave the hair for optimal adhesion of the electrodes
- Attach the electrodes to the cable ends
- Attach a disposable adhesive electrode to the push-button contact on the back of the device.

Please do not use any additional plaster or adhesive tape.

The electrode is used to fix the device to the patient's chest. This reduces motion artifacts and improves the quality of the recording. This electrode has no medical / diagnostic function

1 Monitor mount

- Position the self-adhesive electrodes on the patient's chest as shown on image 1:
1 ● red, **2** ● yellow, **3** ● green, **4** ○ white
- Press the edge of the electrode firmly against the skin to fix it in place
- The device starts automatically within 60 seconds of the electrodes making contact with the skin

2 Check recording mode

- The 'QRS complex' symbol **5** indicates the recording status.
Green flashing light: ECG recording active
- The 'Battery' symbol **6** provides information on the charging status.
Green flashing light: battery voltage sufficient
- By tapping the device firmly with the flat of the hand, the patient can set a marker in case of discomfort



Accessories

- Device with 4 cables
- Self-adhesive electrodes
- Order form, patient diary and instructions
- Red closure clip for return